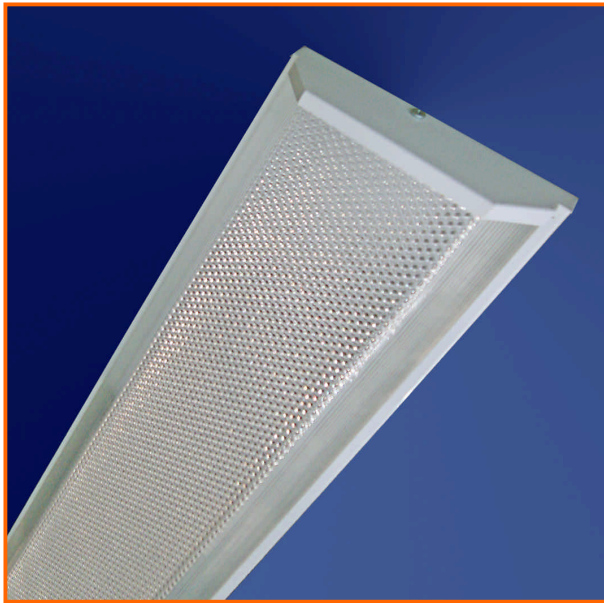


Luminaire Data Sheet



Product Range	Berwick
Product Reference	BWK 135, 235, 149, 249, 154, 254, 180, 280
Description	Surface mounted profile TL-5 luminaire with captive diffuser. Available in single and twin lamp versions 35W, 49W, 54W, and 80W TL-5.
Principle Application	School lighting, general lighting
Lamp Type	TL-5
Lamp Cap	G5
Control Gear	Philips HF-Performer (DALI, DSI and 1-10v versions available).
System Power	Min 40w, Max 172w
Weight	6kg max
Technical Specification	Housing made from powder coated sheet steel. Polycarbonate diffuser. Integral emergency versions available.
IP Rating	IP20
Supply Voltage	220-240V
Dimensions	Nominal 1200mm or 1500mm long, 200mm wide, 53mm deep.
Mounting Arrangement	Surface mounted
Mains Connection Arrangement	Fused terminal block.
Lighting characteristics	DLOR 57%, ULOR 15%, TOTAL 72%. (Typical)

High Technology Lighting Ltd has a policy of continual design and development. As a result specifications and dimensions are subject to change without notice.