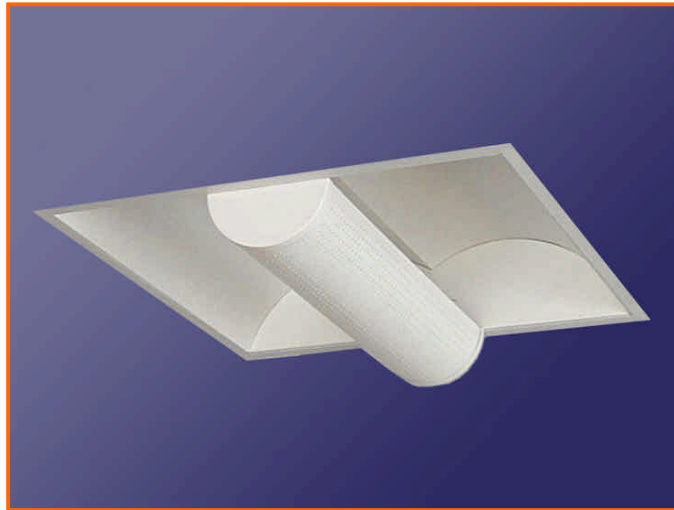


Luminaire Data Sheet



Product Range	CULMINATION
Product Reference	DCC 140, 155, 240, 255
Description	Recessed/semi recessed direct/indirect luminaire
Principle Application	Office lighting
Lamp Type	40W & 55W PL-L
Lamp Cap	2G11
Control Gear	Philips HF-Performer (DALI, DSI and 1-10v versions available).
System Power	Min 44W, Max 113W
Weight	5.4kg
Technical Specification	Housing fabricated from corrosion resistant 0.7 zintec.
IP Rating	IP20
Supply Voltage	220-240V
Dimensions	Nominal 600mm x 600mm. 500mm
Mounting Arrangement	Recessed in to ceiling grid
Mains Connection Arrangement	Plug and socket
Lighting characteristics	DLOR 51%, ULOR NIL, TOTAL 51%

High Technology Lighting Ltd has a policy of continual design and development. As a result specifications and dimensions are subject to change without notice.